

PARTS CATALOG

Additional Finisher Tray-C1

Canon

Oct 12 2005

PREFACE

This Parts Catalog contains listings of parts used

Diagrams are provided with the listings to aid the service technician in identifying clearly, the item to be ordered.

Whenever ordering parts, consult this Parts Catalog for all of the information pertaining to each item. Be sure to include, in the Parts Request, the full item description, the item part number, and the quantity.

COPYRIGHT (C) 1999 CANON INC.

Use of this manual should be strictly supervised to avoid disclosure of confidential information.

Contents

NUMERICAL INDEX

Additional Finisher Tray-C1 1-1

Additional Finisher Tray-C1

QA	ASSEMBLY LOCATION DIAGRAM	2-1
Q01	PACKING KIT	2-2
Q21	ADDITIONAL FINISHER TRAY-C1	2-4
Q22	SHUTTER DRIVE ASSEMBLY	2-7

NUMERICAL INDEX

Additional Finisher Tray-C1

PARTS NUMBER	FIGURE & KEY NO.	PARTS NUMBER	FIGURE & KEY NO.	PARTS NUMBER	FIGURE & KEY NO.
4A3-1174-000	Q21 - 1	XA9-1386-000	Q21 - 10		
4A3-1175-000	Q21 - 2	XB1-2300-405	Q01 - 501		
4A3-1177-000	Q21 - 20	XB1-2300-405	Q21 - 502		
4A3-1181-000	Q21 - 35	XB1-2300-405	Q22 - 501		
4A3-1210-000	Q21 - 8	XB4-5401-205	Q21 - 507		
4A3-1261-000	Q01 - 1	XB6-7300-405	Q21 - 501		
4A3-1262-000	Q22 - 5	XD1-1106-232	Q21 - 505		
4A3-1264-000	Q22 - 6	XD1-1208-229	Q21 - 506		
4A3-1270-000	Q01 - 2	XD2-1100-402	Q21 - 503		
4A3-1625-000	Q21 - 14	XD3-2200-102	Q21 - 504		
4A3-1631-000	Q21 - 15	XD3-2200-102	Q22 - 502		
4A3-1632-000	Q21 - 16	XF2-1103-840	Q21 - 32		
4A3-1635-000	Q21 - 17	XF2-3308-160	Q21 - 33		
4A3-1639-000	Q21 - 9	XG9-0337-000	Q21 - 34		
4A3-1879-000	Q21 - 3				
4A3-1898-000	Q21 - 4				
4A3-1899-000	Q21 - 36				
4F3-0263-000	Q21 - 13				
4G3-0411-000	Q01 - 3				
4G3-0478-000	Q21 - 19				
4G3-0573-000	Q21 - 7				
4G3-0803-000	Q22 - 7				
4G3-0804-000	Q21 - 5				
4G3-0805-000	Q21 - 6				
4G3-0807-000	Q21 - 11				
4G3-0855-000	Q21 - 12				
4G3-0924-000	Q22 -				
4H3-0089-000	Q22 - 8				
4K1-4055-000	Q21 - 25				
4S3-0112-000	Q22 - 9				
4S3-0119-000	Q21 - 23				
4S3-0127-000	Q21 - 26				
4S3-0128-000	Q21 - 27				
4S3-0129-000	Q21 - 28				
4S3-0130-000	Q21 - 29				
4S3-0139-000	Q22 - 10				
4S3-1024-000	Q21 - 24				
4S3-1024-000	Q22 - 11				
4S3-1025-000	Q22 - 12				
4S3-2080-000	Q21 - 37				
4S3-2083-000	Q21 - 21				
4S3-2084-000	Q21 - 30				
4S3-2093-000	Q22 - 13				
4S3-3058-000	Q21 - 22				
4S3-6021-000	Q21 - 31				
FC5-4424-000	Q22 - 1				
FC5-4425-000	Q22 - 2				
NPN	Q01 -				
NPN	Q21 -				
WG8-5696-000	Q21 - 18				
WG8-5696-000	Q22 - 3				
WT2-5056-000	Q22 - 4				

Additional Finisher Tray-C1

Additional Finisher Tray-C1

F26-7311-000 KRZ

Contents

QA	ASSEMBLY LOCATION DIAGRAM	2-1
Q01	PACKING KIT	2-2
Q21	ADDITIONAL FINISHER TRAY-C1	2-4
Q22	SHUTTER DRIVE ASSEMBLY	2-7

FIGURE QA ASSEMBLY LOCATION DIAGRAM

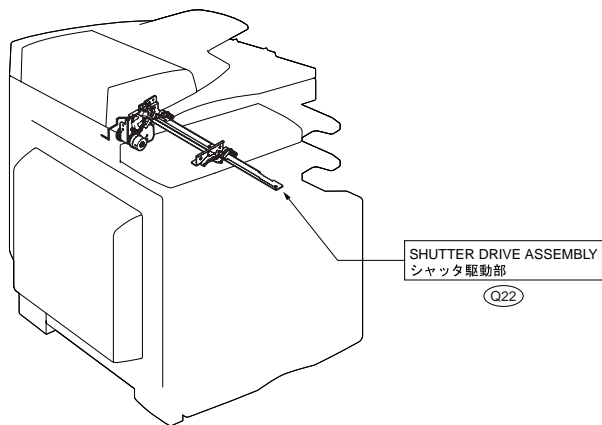
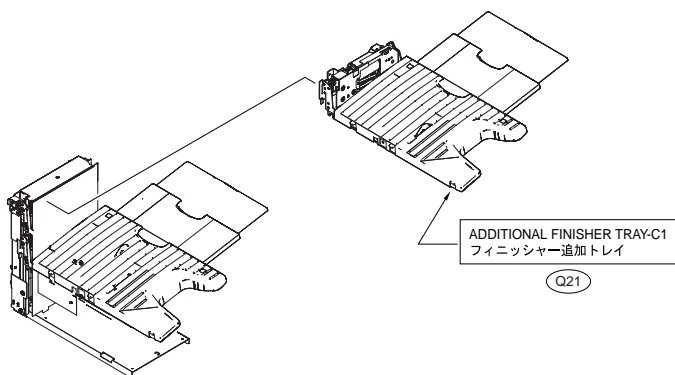


FIGURE Q01 PACKING KIT

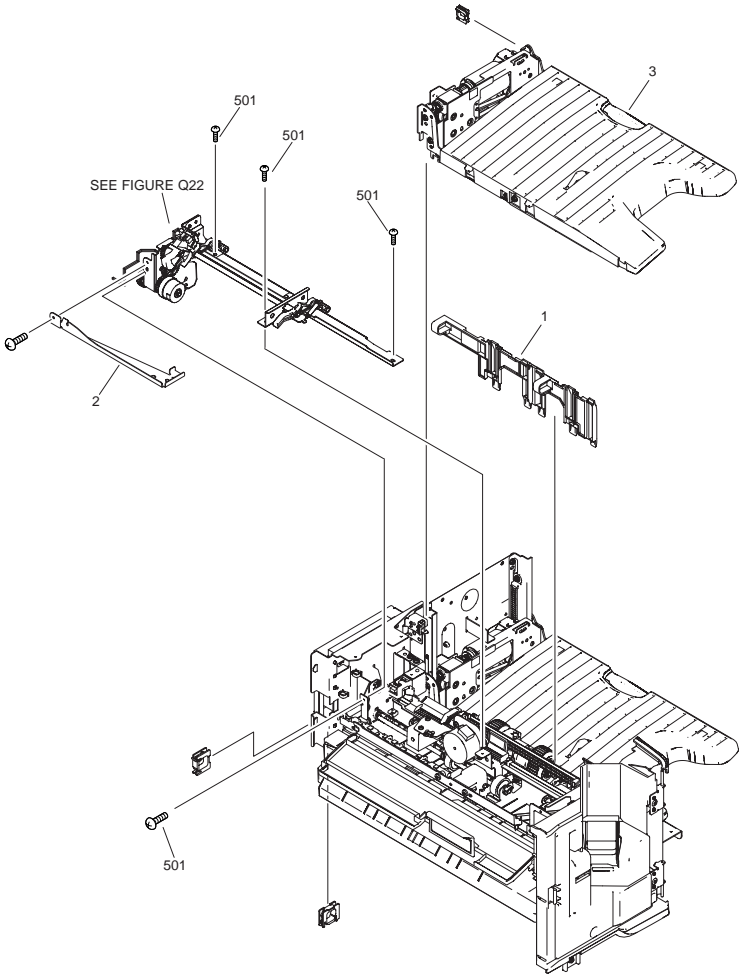


FIGURE & KEY NO.	PARTS NUMBER	RANK	Q'TY	DESCRIPTION	SERIAL NUMBER/REMARKS	SVC
Fig.Q01	NPN		RF	PACKING KIT		
1	4A3-1261-000		1	SHUTTER		
2	4A3-1270-000		1	STAY, SHUTTER		
3	4G3-0411-000		1	OPTION TRAY SENSOR UNIT		
501	XB1-2300-405		5	SCREW, MACH. BH, M3X4		

FIGURE Q21 ADDITIONAL FINISHER TRAY-C1

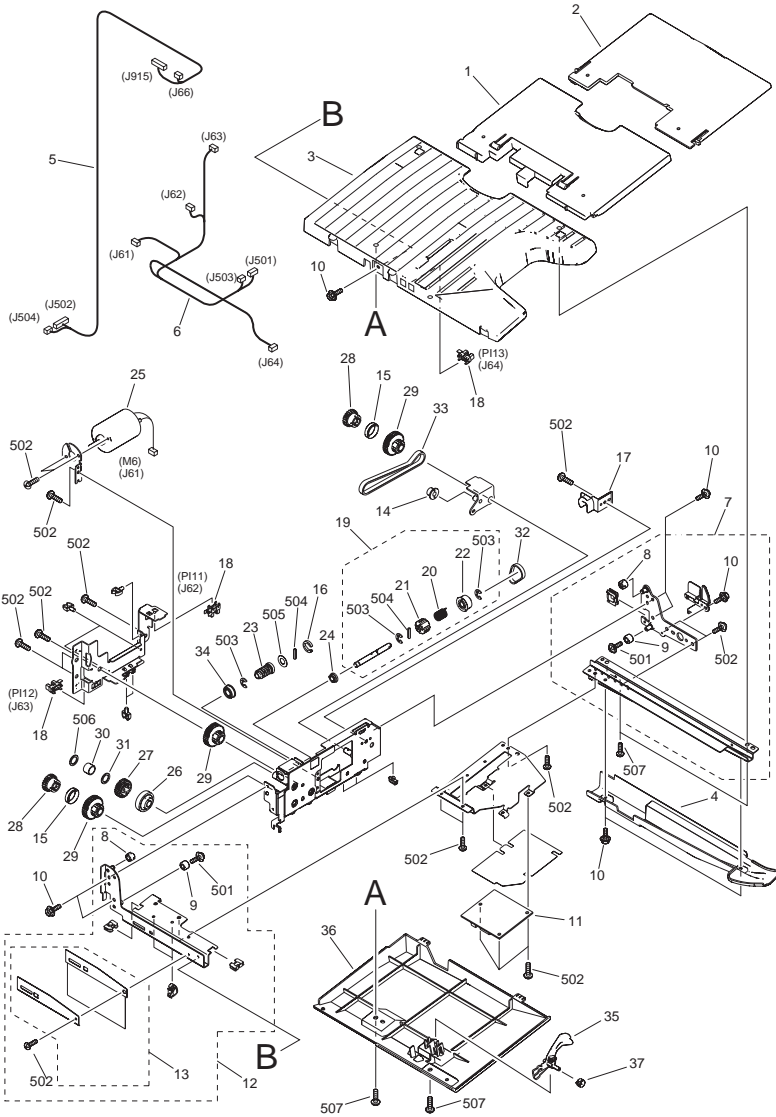


FIGURE & KEY NO.	PARTS NUMBER	R A N K	Q'TY	DESCRIPTION	SERIAL NUMBER/ REMARKS	S V C
Fig.Q21	NPN		RF	ADDITIONAL FINISHER TRAY-C1		
1	4A3-1174-000		1	TRAY, SUB		
2	4A3-1175-000		1	TRAY, SUB		
3	4A3-1879-000		1	TRAY, MAIN		
4	4A3-1898-000		1	COVER, TRAY, LOWER		
5	4G3-0804-000		1	CABLE, INTERFACE	J66,502,504,915	
6	4G3-0805-000		1	CABLE, TRAY	J61,62,63,64,501,503	
7	4G3-0573-000		1	TRAY SIDE PLATE UNIT (R)		
8	4A3-1210-000		2	ROLLER		
9	4A3-1639-000		2	ROLLER		
10	XA9-1386-000		10	SCREW, RS, M3X8		
11	4G3-0807-000		1	DRIVER PCB ASSEMBLY		
12	4G3-0855-000		1	TRAY SIDE PLATE UNIT(L)		
13	4F3-0263-000		1	ELIMINATOR, STATIC CHARGE		
14	4A3-1625-000		1	TENSONER, BELT		
15	4A3-1631-000		2	COLLAR		
16	4A3-1632-000		1	COLLAR		
17	4A3-1635-000		1	COLLAR, ENCODER		
18	WG8-5696-000		3	PHOTO INTERRUPTER, TLP1243	PI11,12,13 J62,63,64	
19	4G3-0478-000		1	SHAFT, WORM GEAR		
20	4A3-1177-000		1	KNOB, WORM GEAR		
21	4S3-2083-000		1	SPRING		
22	4S3-3058-000		1	PULLEY, 28T		
23	4S3-0119-000		1	GEAR, WORM		
24	4S3-1024-000		1	BUSHING		
25	4K1-4055-000		1	MOTOR, DC	M6 J61	
26	4S3-0127-000		1	WORM, WHEEL		
27	4S3-0128-000		1	GEAR, 27T		
28	4S3-0129-000		2	GEAR, 20T		
29	4S3-0130-000		3	PULLEY, 36T/GEAR, 18T		
30	4S3-2084-000		1	SPRING		
31	4S3-6021-000		1	WASHER		

FIGURE & KEY NO.	PARTS NUMBER	RANK	Q'TY	DESCRIPTION	SERIAL NUMBER/REMARKS	SVC
32	XF2-1103-840		1	BELT, TIMING		
33	XF2-3308-160		1	BELT, TIMING		
34	XG9-0337-000		1	BEARING, BALL		
35	4A3-1181-000		1	FLAG, TRAY SENSOR		
36	4A3-1899-000		1	COVER, UNDER		
37	4S3-2080-000		1	SPRING		
501	XB6-7300-405		2	SCREW, TP, M3X4		
502	XB1-2300-405		16	SCREW, MACH. BH, M3X4		
503	XD2-1100-402		3	RETAINING RING(E-TYPE)		
504	XD3-2200-102		2	PIN, PARALLEL		
505	XD1-1106-232		1	WASHER		
506	XD1-1208-229		1	WASHER		
507	XB4-5401-205		4	SPECIAL TAPPING SCREW		

FIGURE Q22 SHUTTER DRIVE ASSEMBLY

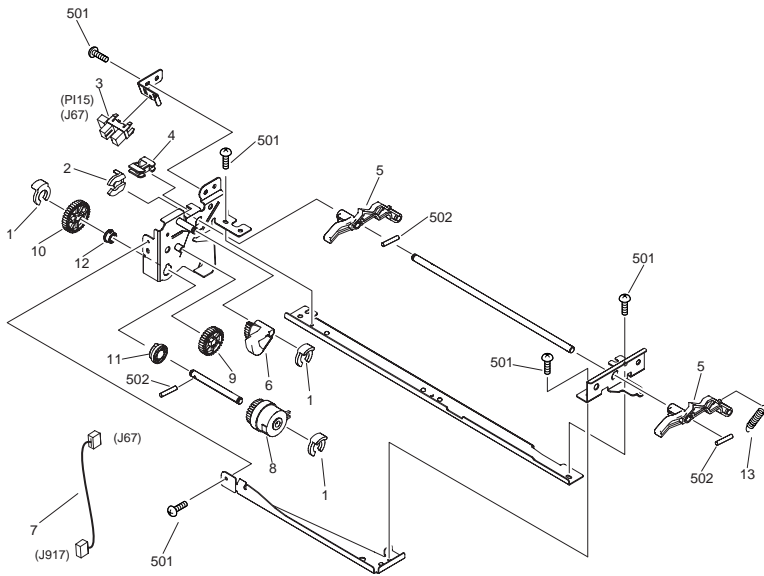


FIGURE & KEY NO.	PARTS NUMBER	R A N K	Q'TY	DESCRIPTION	SERIAL NUMBER/ REMARKS	S V C
Fig.Q22	4G3-0924-000		RF	SHUTTER DRIVE ASSEMBLY		
1	FC5-4424-000		3	CLIP		
2	FC5-4425-000		1	CLIP		
3	WG8-5696-000		1	PHOTO INTERRUPTER, TLP1243	PI15 J67	
4	WT2-5056-000		1	CLIP, CABLE		
5	4A3-1262-000		2	LEVER, SHUTTER		
6	4A3-1264-000		1	GEAR, SHUTTER MOVE		
7	4G3-0803-000		1	CABLE, SHUTTER	J67,917	
8	4H3-0089-000		1	CLUTCH, ELECTROMAGNETIC		
9	4S3-0112-000		1	GEAR, 31T		
10	4S3-0139-000		1	GEAR, SHUTTER		
11	4S3-1024-000		1	BUSHING		
12	4S3-1025-000		1	BUSHING		
13	4S3-2093-000		1	SPRING		
501	XB1-2300-405		5	SCREW, MACH., TRUSS HEAD, M3X4		
502	XD3-2200-102		3	PIN, PARALLEL		

Prepared by
OIP HFE Promotion Center
CANON INC.

Canon